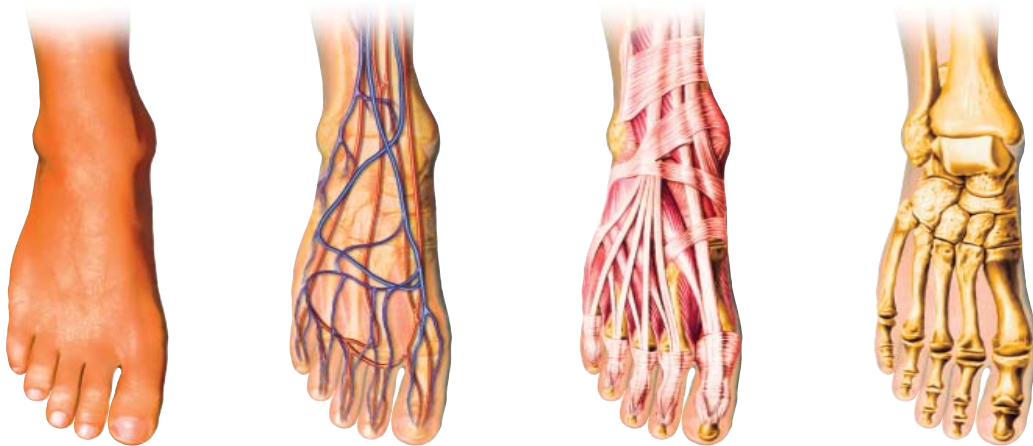


THE FLORIDA PODIATRIC MEDICAL ASSOCIATION PRESENTS



Science & Management Symposium



2016 FPMA Science & Management Symposium

January 13 - 17, 2016

**Hilton Orlando
Orlando, Florida**



Welcome to the Hilton Orlando and SAM 2016!

6001 Destination Parkway, Orlando, Florida 32819

The Hilton Orlando is located near International Drive shopping and dining as well as world-famous theme parks and attractions. Hotel amenities include two pools, a lazy river, waterslide, whirlpool, cabanas, fire pits, full-service spa and fitness center, nine-hole putting green, and a variety of recreational courts.

You can choose from **six dining options** at the Hilton Orlando, ranging from quick take-out to full-service restaurants (*see the Hilton Orlando maps on pages 4 and 5 for restaurant locations*). Room service is also available.

- The **Marketplace** features everyday bistro fare, including sandwiches, salads, and convenience items “to go”.
- **The Bistro** offers simple, fresh, and natural food in a comfortable and casual setting.
- **Spencer’s** is an on-site steakhouse that also features a signature raw bar, local seafood, and local organic produce.
- **David’s Club Bar and Grill** is an American “Gastro Pub” showcasing creative, contemporary, comfort food.
- **Tropics Pool Bar & Grill** offers simple poolside fare with a tropical twist.
- The **Lobby Lounge** features handcrafted cocktails and a small bite menu perfect for sharing.





Science & Management Symposium

Information About Badge Scanning at SAM 2016

Every attendee in the physician program is assigned an electronic badge upon check-in. This badge will need to be scanned at the start and end of each half-day session in order to determine the exact time of attendance and assign credits accordingly. **You must scan in and out of each lecture hall every time you enter and exit.**

Main Lecture Hall (Orlando IV - VI):

Scanning machines are located at the entrance to this lecture hall. You will need to physically touch your badge to the machine **every time you enter and exit.** The machine will beep and a green light will flash upon entering the lecture hall. The machine will beep and a red light will flash upon exiting the lecture hall.

Daily Side Tracks: Scanning machines are located at the entrance to these lecture halls. You will need to physically touch your badge to the machine **every time you enter and exit these tracks.** The machine will beep and a green light will flash upon entering the lecture halls. The machine will beep and a red light will flash upon exiting the lecture halls.

A log will be posted in the registration area each day for you to review your earned hours and submit corrections, if necessary.

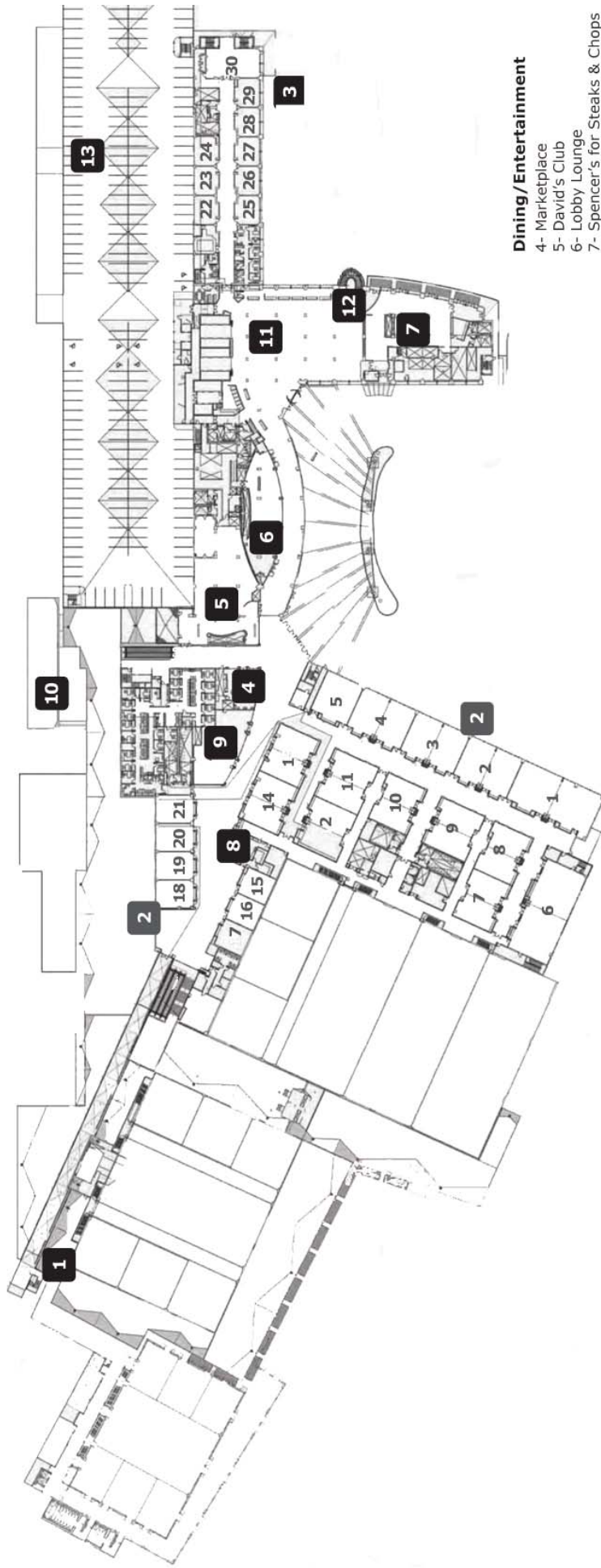
Total contact hours will be calculated from the electronic badges that each physician will use to enter the lecture halls. For FPMA members, those contact hours will be documented on your FPMA continuing education sheet. Certificates showing total contact hours will be mailed to non-members.

SAM attendees will be awarded up to 30.75 continuing education contact hours, depending on tracks attended.

In Florida, Practice Management hours are not required and are limited to 3.0 hours per biennium; Risk Management is limited to 1.0 hour per biennium; Laws & Rules is limited to 1.0 hour per biennium; and Medical Errors is limited to 2.0 hours per biennium.

Table of Contents

Hilton Orlando Maps	4
Lobby Level	4
Lower Level	5
Meeting Rooms South	6
Meeting Rooms North	7
Outdoor Space.....	8
Welcome.....	10
Physicians' Schedules At-A-Glance.....	11
Wednesday, January 13, 2016	11
Thursday, January 14, 2016	12
Friday, January 15, 2016.....	14
Saturday, January 16, 2016	16
Sunday, January 17, 2016	18
CECH Worksheet	19
Physicians' Schedules with Presenters.....	20
Wednesday, January 13, 2016	20
Thursday, January 14, 2016	22
Friday, January 15, 2016.....	26
Saturday, January 16, 2016	28
Sunday, January 17, 2016	30
Educational Program Objectives.....	31
Assistants' Schedules	32
Friday, January 15, 2016.....	32
Saturday, January 16, 2016	32
Sunday, January 17, 2016	33
Exhibitors.....	34
Map of Exhibit Hall	34
Exhibitors in Alphabetical Order	35
Mission Statement.....	38
FPMA Committees/Staff...Inside Back Cover	
Sponsors	Back Cover



Dining/Entertainment

- 4- Marketplace
- 5- David's Club
- 6- Lobby Lounge
- 7- Spencer's for Steaks & Chops

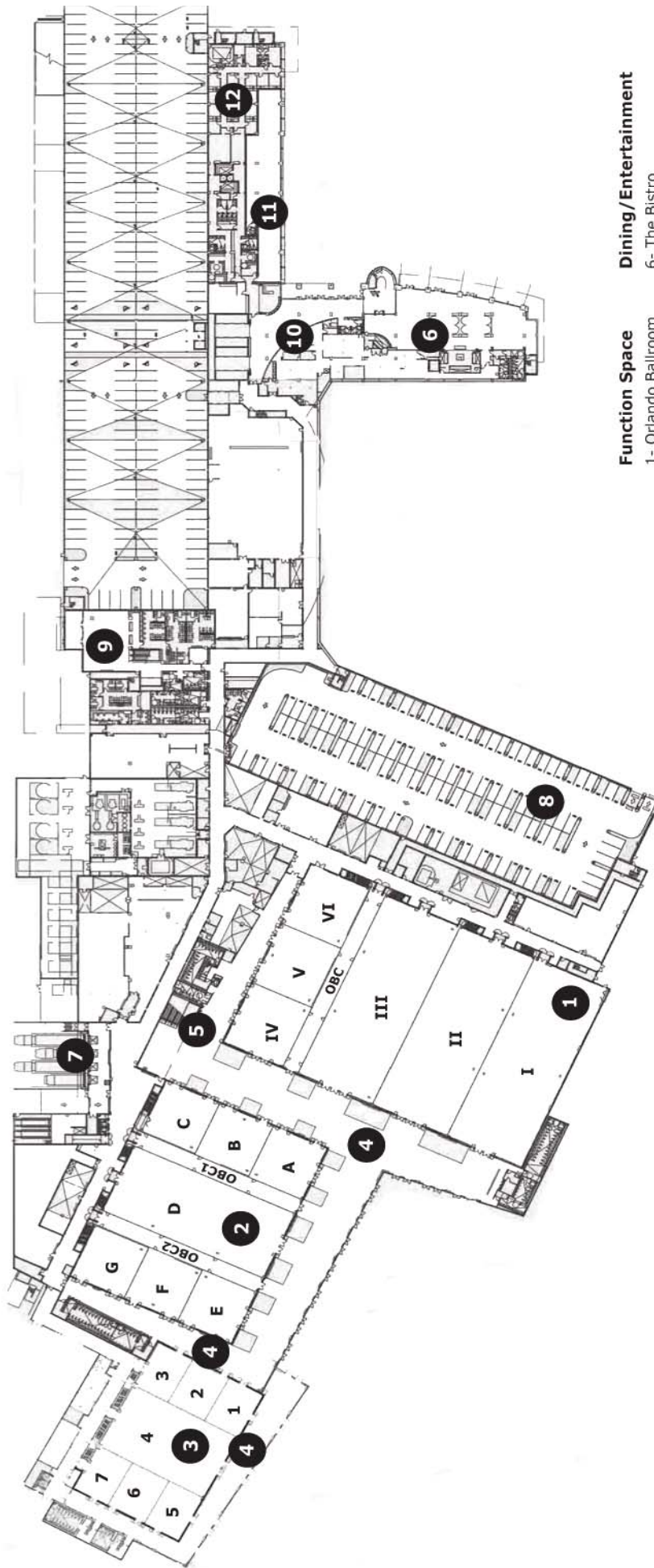
Hotel Facilities

- 8- Meeting Planner Offices / Registration
- 9- Business Center / Retail
- 10- Group Arrival Canopy
- 11- Lobby
- 12- Spiral Staircase
- 13- Self-Parking Garage

Function space

- 1- Covered, open air walkway to Orange County Convention Center
- 2- Meeting Rooms
- 3- Boardrooms

Hilton Orlando Lobby Level



Dining/Entertainment

6- The Bistro

Function Space

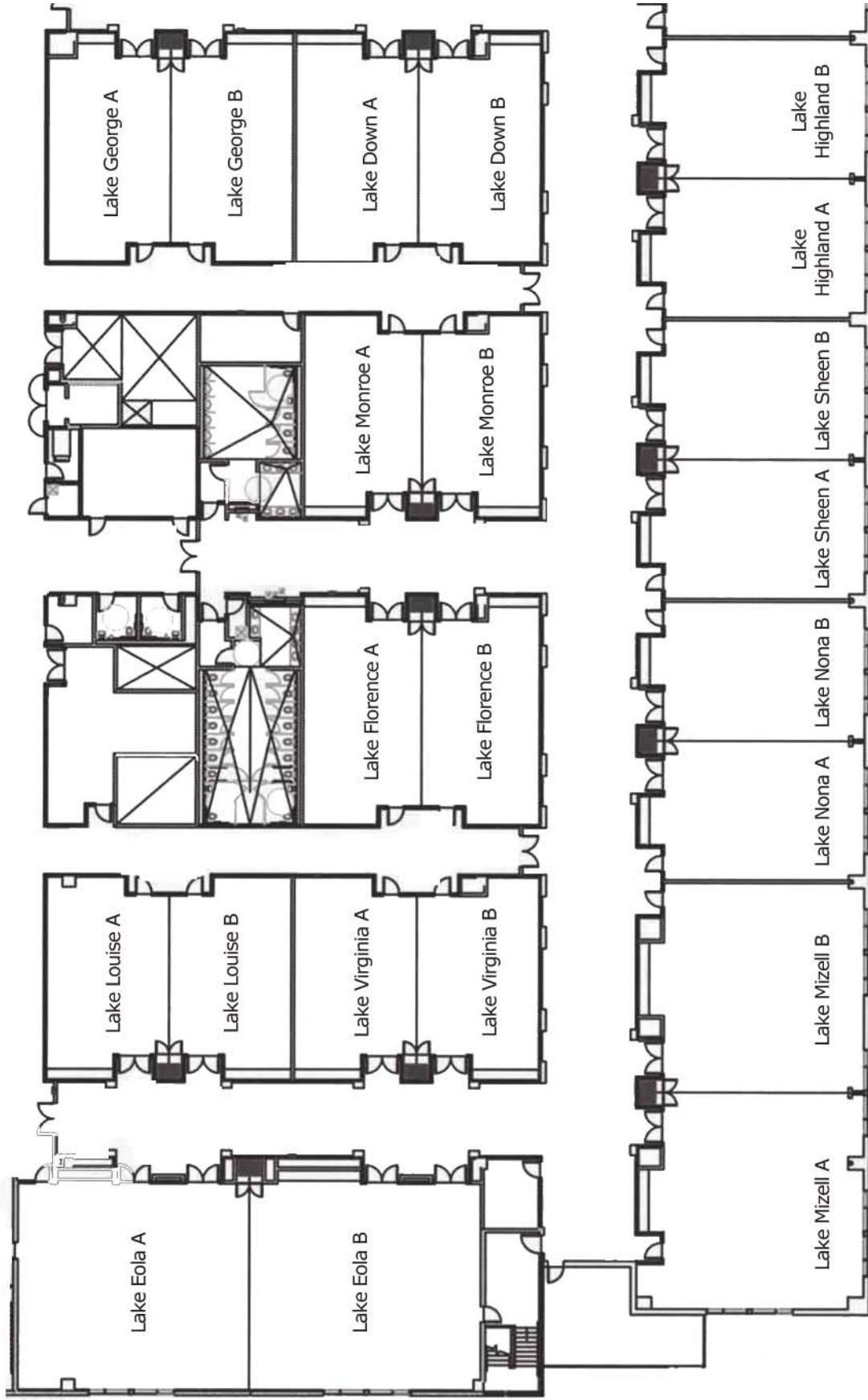
1- Orlando Ballroom
2- Orange Ballroom
3- Florida Ballroom
4- Pre-function space
5- Escalators
& Grand Staircase

Hotel Facilities

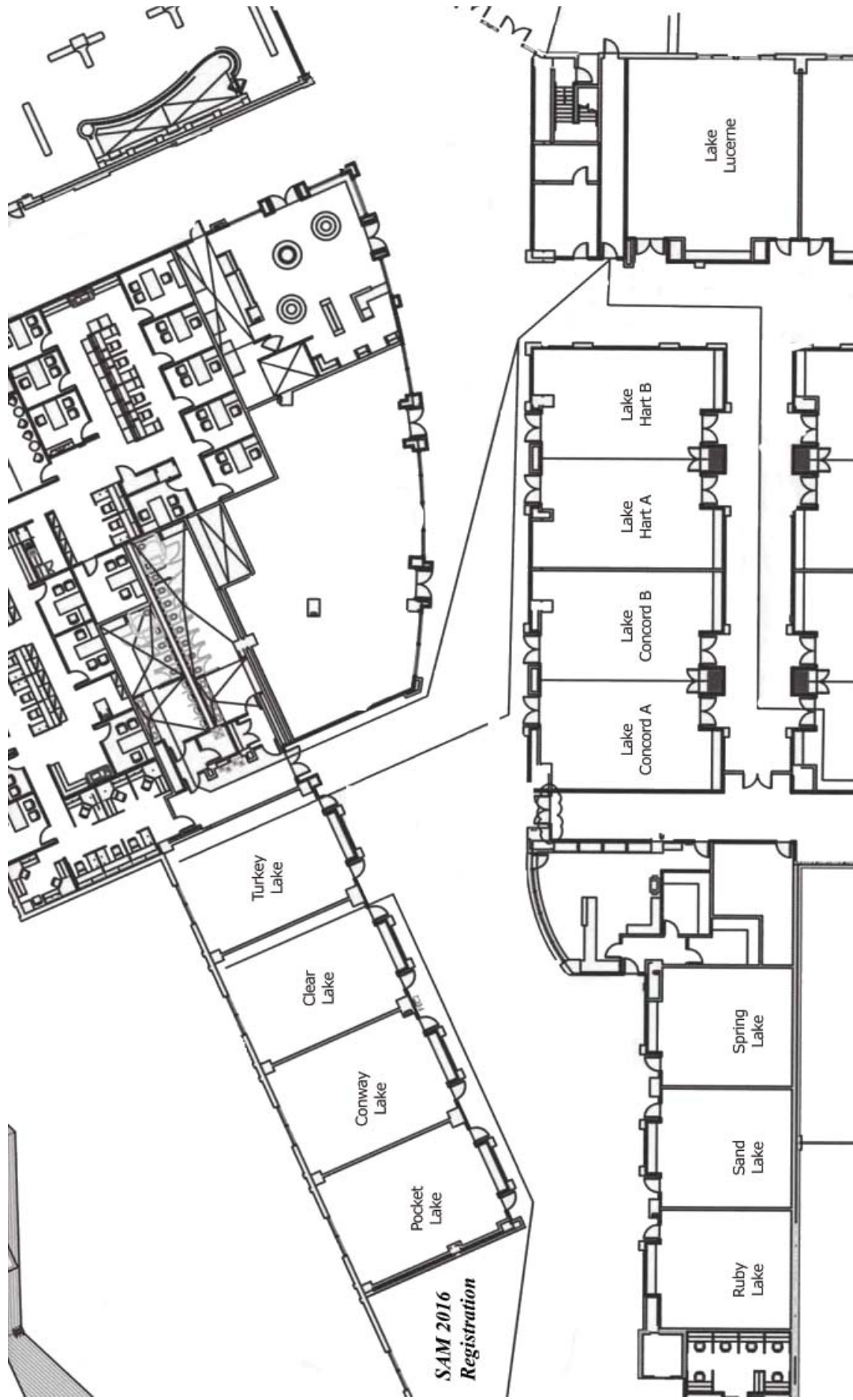
7- Loading Dock
8- Valet Garage
9- Group Arrival
10- Lower Lobby
11- Fitness Center
12- Spa

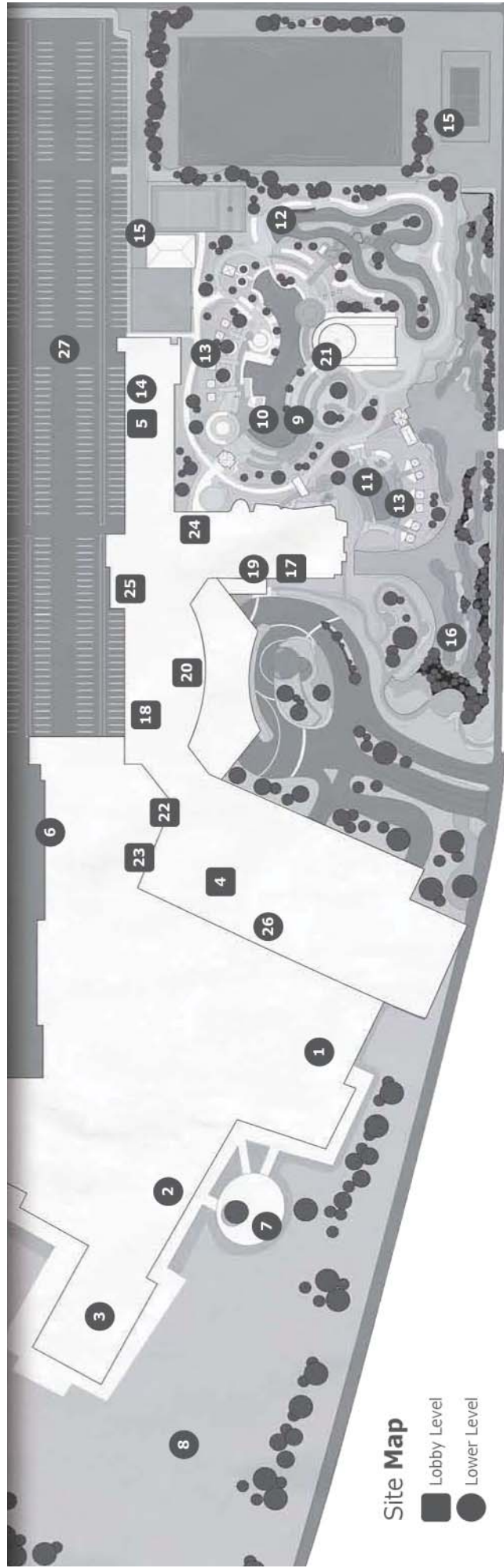
Hilton Orlando Lower Level

Hilton Orlando Meeting Rooms South



Hilton Orlando Meeting Rooms North





Site Map

- Lobby Level
- Lower Level

Indoor/Outdoor Function Space

- 1- Orlando Ballroom
- 2- Orange Ballroom
- 3- Florida Ballroom
- 4- Meeting Rooms
- 5- Boardrooms
- 6- Dedicated Group Arrival Area
- 7- Ballroom Terrace
- 8- Southwest Lawn
- 9- Event Deck

Recreation

- 10- Main Pool
- 11- Quiet Pool
- 12- Lazy River
- 13- Cabanas
- 14- The Spa & Fitness Center
- 15- Recreation Courts (Tennis, Basketball, Volleyball, Bocce ball)
- 16- 9-Hole Executive Putting Golf Course

Dining

- 17- Spencer's for Steaks & Chops
- 18- David's Club
- 19- The Bistro
- 20- Lobby Lounge
- 21- Tropics Pool Bar & Grill
- 22- Marketplace

Hotel Facilities

- 23- Business Center
- 24- Front Desk
- 25- Guestrooms/Suites
- 26- Valet Parking
- 27- Self Parking

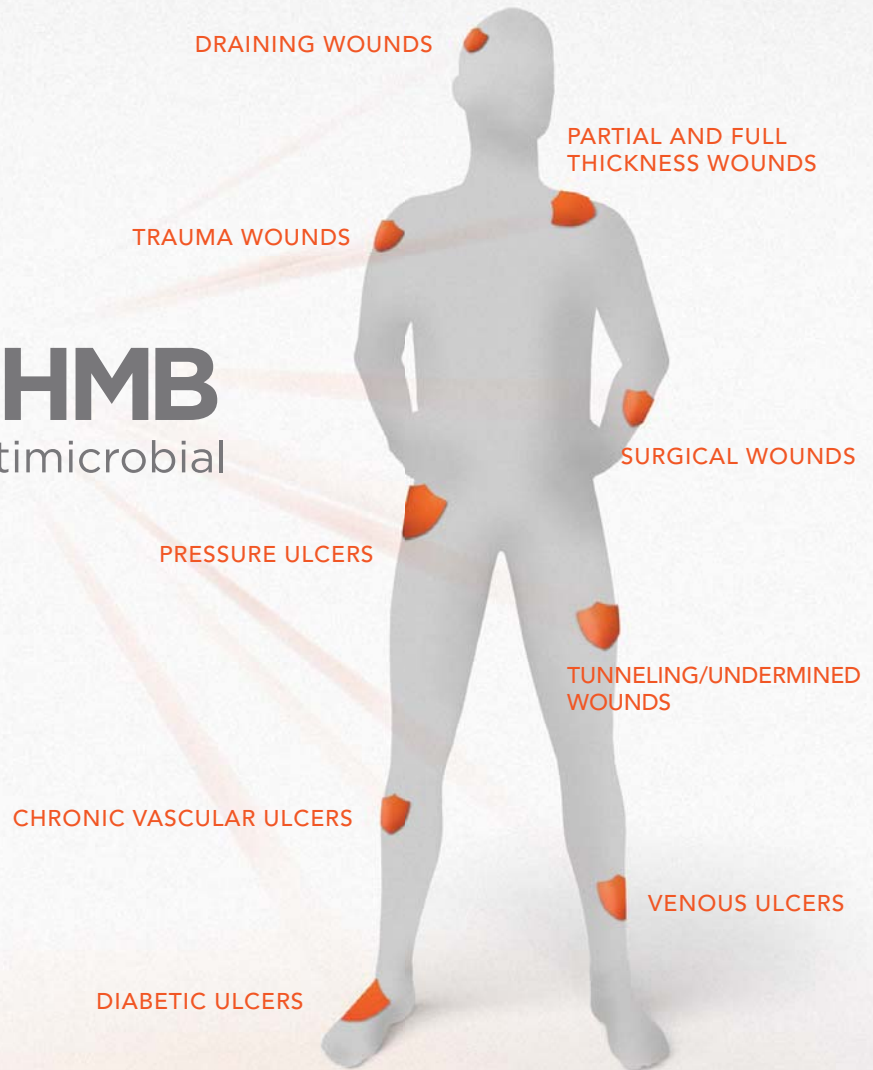
Introducing PuraPly™ Antimicrobial

THE FIRST AND ONLY PURIFIED COLLAGEN MATRIX PLUS PHMB^a ANTIMICROBIAL

PuraPly™
ANTIMICROBIAL
Wound Matrix

Use PuraPly Antimicrobial
for a wide variety of wound types¹

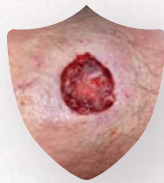
Purified
Collagen  **PHMB**
Matrix Antimicrobial



COLLAGEN + PHMB PROVIDES CLINICAL BENEFIT IN 3 WAYS



- 1 Purified Type I collagen matrix creates a durable, biocompatible scaffold²



- 2 Effective barrier against a wide range of microorganisms^{2,3}



- 3 PHMB is known to disrupt and inhibit the formation of biofilm on the wound surface³



Type I collagen sheet coated with the broad-spectrum antimicrobial PHMB¹

^aPHMB = polyhexamethylenebiguanide hydrochloride.

For ordering information, visit puraplyaminfo.com

References: 1. PuraPly Antimicrobial [package insert]. Canton, MA: Organogenesis, Inc; 2015.
2. Data on file. Organogenesis, Inc. 3. Hübner NO, Kramer A. *Skin Pharmacol Physiol*. 2010;23(suppl):17-27.

PuraPly Antimicrobial and PuraPly are trademarks of Organogenesis, Inc.
Please see complete prescribing information at www.organogenesis.com.

©2015 Organogenesis, Inc. OI-PPY1018 07-2015. All rights reserved. Printed in U.S.A. 7/15.

Organogenesis inc.
Advancing Healing

Welcome to SAM 2016!

The Florida Podiatric Medical Association is excited to bring you SAM 2016, which highlights the latest procedures, speakers, and new products in podiatric medicine and surgery.

- We have an outstanding group of speakers providing information on a variety of subjects, from coding to major forefoot and rearfoot procedures. Not only will you learn more about the medical/clinical aspects of podiatric medicine and surgery, but be prepared to spend a half day expanding your practice management skills with an excellent team provided by the American Academy of Podiatric Practice Management (AAPP). *Ask the Experts*, with Drs. Mark Block and Harry Goldsmith, is also back this year.
- The APMA Regional Lecture Series Non-CECH Lunch Program is an informative lunch and learn program that will take place on Wednesday, January 13, 2016 from 12:00 p.m. to 1:00 p.m. Stephanie C. Wu, DPM will be presenting “A Scientifically Designed Topical Treatment Option for Toenail Onychomycosis: A Look at the Data, Including Populations of Interest” while attendees are treated to a complimentary lunch. CECH’s are not provided for this presentation and space is limited to the first 100 people who sign up.
- Florida required lectures are being presented on Friday (Risk Management) and Saturday (Laws and Rules and Medical Errors).
- Wright Medical’s RV Labs are back again this year. These will take place Thursday through Saturday during SAM 2016. Each lab session will hold up to six surgeons (three per station) and they are all expected to fill up quickly. SAM attendees can register for the labs on-site at the conference beginning Wednesday, January 13, 2016 at the Wright Medical RV, located outside the Hilton Orlando. Please note that space is limited and attendance of the labs earns NO CECH.
- The SAM Exhibit Hall will be open from Thursday thru Saturday and SAM attendees and their guests are encouraged to visit with the vendors and see demonstrations of the latest products and services in podiatric medicine and surgery. Make sure you take some time to check out the SAM 2016 Exhibit Hall and all it has to offer.
- An outstanding Podiatric Assistants program is being offered to cover both front and back office procedures on Friday and Saturday. A Board-certified X-ray Certification Program for X-ray assistants will take place on Saturday, with the X-ray Assistants examination for initial licensure being offered on Sunday morning.
- Plan to attend the FPMA Presidential Cocktail Reception on Saturday night from 7:00 p.m. to 10:00 p.m. (be sure to bring your ticket for entry). There will be food, drinks, and music and it’s sure to be a good time.

Be prepared to learn and have a great time at SAM 2016!

Note About Lunches:

- * Lunch tickets can be found in attendees’ packets.
- * The Front/Back Office Assistant program will begin at 1:30 p.m. on Friday (***Front/Back Office Assistants are on their own for lunch on Friday***).
- * Lunch will be provided for Physicians/Exhibitors on Thursday and Friday.
- * Lunch will be provided for Physicians/Assistants/Exhibitors on Saturday.
- * Food and drink are also available for purchase in the hotel.

Physicians' Schedules At-A-Glance

Abbreviation/Color Key

S = Scientific PM = Practice Management
 RM = Risk Management LR = Laws and Rules
 ME = Medical Errors

PLEASE NOTE: CECH information is provided for each course in the Schedules At-A-Glance, BUT YOUR SCANNED HOURS WILL DETERMINE ACTUAL CECH EARNED.

Wednesday, January 13, 2016

Start	End	Course/Event	Location	Speaker(s)	CECH
7:00 a.m.	5:00 p.m.	SAM Registration Desk Open	Pocket Lake	N/A	N/A
7:30 a.m.	8:00 a.m.	Continental Breakfast	In front of Orlando IV - VI	N/A	N/A
2:00 p.m.	---	Wright Medical Lab Registration Begins	RV Located Outside the Hilton Orlando	N/A	N/A
8:00 a.m. 10:30 a.m.	9:45 a.m. 12:00 p.m.	Track I: Ask the Experts (Open Forum)	Orlando IV - VI	Block, Goldsmith	3.25 (S)
8:00 a.m.	9:45 a.m.	Track II: Lengthening vs. Masquele vs. Free Fibula/Free Functional Muscle Transfers/When to Say When and Amputate	Lake Concord	Bibbo	1.75 (S)
9:45 a.m.	10:30 a.m.	Break	In front of Orlando IV - VI	N/A	N/A
10:30 a.m.	11:30 a.m.	Track II: Neuropathic/Immuno Compromised Ankle Fractures/Lengthening vs. Transport in as a Salvage Procedure	Lake Concord	Marin	1.0 (S)
11:30 a.m.	12:00 p.m.	Track II: Indications for Reverse Muscle Flaps	Lake Concord	Rodriguez-Callaz	0.5 (S)
12:00 p.m.	1:00 p.m.	Lunch Break (<i>on your own</i>)	N/A	N/A	N/A
12:00 p.m.	1:00 p.m.	APMA Regional Lecture Series Non-CECH Lunch Program: A Scientifically Designed Topical Treatment Option for Toenail Onychomycosis: A Look at the Data, Including Populations of Interest	Lake Mizell	Wu	N/A
1:00 p.m.	3:00 p.m.	Track I: PQRS Update/Meaningful Use Update/HIPAA Update/ICD-10, the LCD, and Audits	Orlando IV - VI	Brody	2.0 (S)
1:00 p.m.	2:00 p.m.	Track II: Transpositional Soleus Muscle Flap/Combined Osseous and Muscle Flap	Lake Concord	Rodriguez-Callaz	1.0 (S)
2:00 p.m.	3:00 p.m.	Track II: Charcot Arthropathy: Is This Limb Salvageable? Soft Tissue Reconstruction of the Diabetic Foot	Lake Concord	Pereira	1.0 (S)
3:00 p.m.	3:30 p.m.	Break	In front of Orlando IV - VI	N/A	N/A
3:30 p.m.	5:30 p.m.	Track I: Improved Patient Care through Lawsuit Protection and Prevention for Podiatric Physicians	Orlando IV - VI	Mangelson	2.0 (PM)
3:30 p.m.	5:00 p.m.	Track II: Tibia-Calcaneal Arthrodesis With Ring Fixation/Tibial Lengthening in Sickle Cell Patient/External Fixation Tips, Tricks and Pearls	Lake Concord	Lambert	1.5 (S)

Physicians' Schedules At-A-Glance (cont.)

PLEASE NOTE: CECH information is provided for each course in the Schedules At-A-Glance, BUT YOUR SCANNED HOURS WILL DETERMINE ACTUAL CECH EARNED.

Thursday, January 14, 2016					
Start	End	Track/Course/Event	Location	Speaker(s)	CECH
7:00 a.m.	5:00 p.m.	SAM Registration Desk Open	Pocket Lake	N/A	N/A
7:15 a.m.	7:45 a.m.	Continental Breakfast	Foyer	N/A	N/A
7:45 a.m.	8:45 a.m.	Track I : Lyme Disease	Orlando IV - VI	Mastropietro	1.0 (S)
7:45 a.m.	9:45 a.m.	Track II : Biomechanics/Why You SHOULD Be Doing Biomechanical Exams/Does Your Biomechanics Exam Match Your Treatment Plan?	Orange A - C	Spencer	2.0 (S)
8:45 a.m.	5:00 p.m.	Exhibit Hall Open	Orlando I - III	N/A	N/A
8:45 a.m.	9:45 a.m.	Track I : APMA Dermatology Lecture: 2016 Update on Dermatological Conditions	Orlando IV - VI	Vlahovic	1.0 (S)
9:00 a.m.	10:30 a.m.	Wright Medical RV Lab: Flatfoot Recon/Sports Injuries	RV Located Outside the Hilton Orlando	N/A	N/A
9:45 a.m.	10:30 a.m.	Break in Exhibit Hall	Orlando I - III	N/A	N/A
10:30 a.m.	11:00 a.m.	Track I : Collagen, Collagen, Collagen: What is the Difference?	Orlando IV - VI	Karr	0.5 (S)
10:30 a.m.	11:30 a.m.	Track II : Comprehensive H&P of the Pediatric Patient	Orange A - C	DeCaro	1.0 (S)
11:00 a.m.	11:30 a.m.	Track I : Which Bone Void Filler Should I Use?	Orlando IV - VI	Karr	0.5 (S)
11:30 a.m.	12:00 p.m.	Track I : Osteomyelitis: What's New in Treatment Options?	Orlando IV - VI	Karr	0.5 (S)
11:30 a.m.	12:00 p.m.	Track II : New Therapies in the Management of Common Skin Infections of the Foot	Orange A - C	Bistrow	0.5 (S)
12:00 p.m.	1:30 p.m.	Physician/Exhibitor Luncheon	Orlando I - III	N/A	N/A
12:00 p.m.	1:30 p.m.	Non-CECH Lunch Program: Shifting the Antimicrobial Paradigm - A Novel Purified Collagen and Antimicrobial Technology for Wound Management	Lake Mizell	Karr	N/A
12:00 p.m.	1:30 p.m.	Wright Medical RV Lab: Flatfoot Recon/Sports Injuries	RV Located Outside the Hilton Orlando	N/A	N/A
12:30 p.m.	1:30 p.m.	FPMA Executive Board Meeting	Lake Sheen	N/A	N/A
1:30 p.m.	2:15 p.m.	Track I : University of Florida Lectures: Site Infections	Orlando IV - VI	Strannigan	0.75 (S)
1:30 p.m.	2:00 p.m.	Track II : ASPM Lecture Series: Proper Positioning for Ultrasonic Analysis of the Foot and Ankle	Orange A - C	Armstrong	0.5 (S)
2:00 p.m.	2:30 p.m.	Track II : ASPM Lecture Series: Biopsy and Pathology of Common Skin Disorders of the Foot and Leg	Orange A - C	McClain	0.5 (S)
2:00 p.m.	3:00 p.m.	Track III : Workshop: "Eyes on" Gait Analysis: The Secrets to How Watching Your Patient Walk for 10 Seconds Tells You So Much About Them Biomechanically	Lake Sheen	DeCaro	1.0 (S)

Physicians' Schedules At-A-Glance (*cont.*)

Thursday, January 14, 2016 (*cont.*)

Start	End	Track/Course/Event	Location	Speaker(s)	CECH
2:15 p.m.	3:00 p.m.	Track I : University of Florida Lectures: Acute Charcot Foot	Orlando IV - VI	Strannigan	0.75 (S)
2:30 p.m.	3:00 p.m.	Track II : ASPM Lecture Series: No Right or Wrong Controversies in Podiatric Medicine	Orange A - C	Udell	0.5 (S)
3:00 p.m.	3:45 p.m.	Break in Exhibit Hall	Orlando I - III	N/A	N/A
3:45 p.m.	4:15 p.m.	Track I : University of Florida Lectures: Cost Analysis and Review of the Latest Hammertoe Implants	Orlando IV - VI	Piraino	0.5 (S)
3:45 p.m.	4:45 p.m.	Track II : ASPM Lecture Series: The Use of Dermoscopy in the Evaluation of Malignant Skin Disorders	Orange A - C	Bistrow	1.0 (S)
4:15 p.m.	5:15 p.m.	Track I : University of Florida Lectures: Bone Tumors	Orlando IV - VI	Berrey	1.0 (S)
4:30 p.m.	6:00 p.m.	Wright Medical RV Lab: Forefoot Solutions/Bunions/Hammertoes/Lapidus	RV Located Outside the Hilton Orlando	N/A	N/A
4:45 p.m.	5:15 p.m.	Track II : ASPM Lecture Series: The Podiatric Examination of the Newborn to Three Year Old	Orange A - C	DeCaro	0.75 (S)



Physicians' Schedules At-A-Glance (cont.)

PLEASE NOTE: CECH information is provided for each course in the Schedules At-A-Glance, BUT YOUR SCANNED HOURS WILL DETERMINE ACTUAL CECH EARNED.

Friday, January 15, 2016					
Start	End	Track/Course/Event	Location	Speaker(s)	CECH
7:00 a.m.	5:00 p.m.	SAM Registration Desk Open	Pocket Lake	N/A	N/A
7:00 a.m.	7:30 a.m.	Continental Breakfast	Foyer	N/A	N/A
7:30 a.m.	8:15 a.m.	Track I : The Podiatrists Role in the Team Approach to Limb Salvage	Orlando IV - VI	Block	0.75 (S)
7:30 a.m.	8:15 a.m.	Track II : A Topical Medication Toolbox for Challenging Podiatry Cases	Orange A - C	Pearl	0.75 (S)
8:15 a.m.	9:00 a.m.	Track I : New Concepts and Myths in Treating and Evaluating Osteomyelitis of the Lower Extremity	Orlando IV - VI	Block	0.75 (S)
8:15 a.m.	9:00 a.m.	Track II : Chronic Pain	Orange A - C	Reid	0.75 (S)
8:45 a.m.	5:00 p.m.	Exhibit Hall Open	Orlando I - III	N/A	N/A
9:00 a.m.	9:45 a.m.	Track I : Acral Lentiginous Melanoma; What Sets it Apart?	Orlando IV - VI	Bakotic	0.75 (S)
9:00 a.m.	9:45 a.m.	Track II : Stem Cells in Wound Healing	Orange A - C	Regulski	0.75 (S)
9:00 a.m.	10:30 a.m.	Wright Medical RV Lab: Forefoot Solutions/Bunions/Hammertoes/Lapidus	RV Located Outside the Hilton Orlando	N/A	N/A
9:45 a.m.	10:30 a.m.	Break in Exhibit Hall	Orlando I - III	N/A	N/A
10:30 a.m.	12:00 p.m.	FPMA General Membership Meeting	Orlando IV - VI	N/A	N/A
12:00 p.m.	1:30 p.m.	Physician/Exhibitor Luncheon	Orlando I - III	N/A	N/A
12:00 p.m.	1:30 p.m.	Wright Medical RV Lab: Forefoot Solutions/Bunions/Hammertoes/Lapidus	RV Located Outside the Hilton Orlando	N/A	N/A
1:30 p.m.	2:00 p.m.	Track I : Interesting Case Studies in Podiatric Medicine; 2016 Update	Orlando IV - VI	Bakotic	0.5 (S)
1:30 p.m.	2:00 p.m.	Track II : Tendonosis/Fasciosis	Orange A - C	Reid	0.5 (S)
2:00 p.m.	3:00 p.m.	Track I : Examining the Potential of Collagen Powders in the Diabetic Foot	Orlando IV - VI	Moore	1.0 (S)
2:00 p.m.	2:30 p.m.	Track II : Management of Diabetic Foot Infections	Orange A - C	Frykberg	0.5 (S)
2:30 p.m.	3:00 p.m.	Track II : The Neuroischemic Foot - Diagnosis and Management	Orange A - C	Frykberg	0.5 (S)
2:30 p.m.	4:30 p.m.	Track III : Workshop: Podiatric Dermatology for Today's Lower Extremity Clinician; A "Hands-On" Workshop	Lake Mizell	Bakotic	2.0 (S)
3:00 p.m.	3:45 p.m.	Break in Exhibit Hall	Orlando I - III	N/A	N/A
3:30 p.m.	4:00 p.m.	APMA Update	Orlando IV - VI	N/A	N/A
4:00 p.m.	6:00 p.m.	Track I : PICA 2016 Risk Management Lecture: Doctor-Patient Communication: Improving Patient and Physician Satisfaction	Orlando IV - VI	Hofeldt	2.0 (RM)
4:00 p.m.	6:00 p.m.	Track II : PMAF 2016 Risk Management Lecture: DOH: Friend or Foe?	Orange A - C	Bush	2.0 (RM)
4:30 p.m.	6:00 p.m.	Wright Medical RV Lab: Trauma Solutions/Jones/Lisfranc/Ankle/Calcaneal	RV Located Outside the Hilton Orlando	N/A	N/A



MOLECULAR GENETIC TESTING

**Rapidly identifies dermatophytes
T. rubrum and T. mentagrophytes;
now required by an increasing number of
national payors when obtaining preauthorization
for Jublia® and Kerydin®.**



NO MORE!

1 Culture Ordered	2 X	3 X	4 X	5 X	6 X	7 X
8 X	9 X	10 X	11 X	12 X	13 X	14 X
15 X	16 X	17 X	18 X	19 X	20 X	21 X
22 X	23 X	24 X	25 X	26 X	27 X	28 Diagnosis Delivered
29	30	31				

**PCR PROVIDES RESULTS IN
2-3 DAYS!**

- Shown to be twice as sensitive as culture when identifying dermatophytic infectious agents.
- Organism identification to complement high sensitivity PAS/GMS stains without substantially increasing turn-around-time.
- As a clinical lab test (similar to bloodwork or urinalysis), molecular genetic studies are often paid for in-full by insurers.

Welcome to the FPMA SAM 2016!

See the BAKO Team at Island #56-59

We're honored to partner with the podiatric profession!

855-4BAKO-CTS • www.BakoCTS.com

Physicians' Schedules At-A-Glance (cont.)

PLEASE NOTE: CECH information is provided for each course in the Schedules At-A-Glance, BUT YOUR SCANNED HOURS WILL DETERMINE ACTUAL CECH EARNED.

Saturday, January 16, 2016					
Start	End	Track/Course/Event	Location	Speaker(s)	CECH
6:45 a.m.	2:00 p.m.	SAM Registration Desk Open	Pocket Lake	N/A	N/A
7:15 a.m.	7:45 a.m.	Continental Breakfast	Foyer	N/A	N/A
7:30 a.m.	9:45 a.m.	Track I: AAPSM Lecture Series: (1) Hallux Limitus in the Athlete (2) Alternative Exercises for the Injured Athlete (3) Youth Sports, Pediatric Injuries and Burnout (4) Panel Discussion - Two to Three Case Presentations	Orlando IV - VI	(1) Fullem (2) Laird (3) Werd (4) Fullem, Laird, Werd	2.25 (S)
(1) 7:30 a.m. (2) 7:50 a.m. (3) 8:20 a.m. (4) 8:50 a.m. (5) 9:25 a.m.	(1) 7:50 a.m. (2) 8:20 a.m. (3) 8:50 a.m. (4) 9:25 a.m. (5) 9:45 a.m.	Track II: AAPPM Track: (1) Is There Just One thing You Can Do to Guarantee Your Success? (2) Emotionally "React" or Intellectually "Respond" - How to Use Simple Microeconomic Principles to Guide Your Business Decisions (3) Meaningful Use in 2016 (4) The Internet is Dead...Long Live the Internet! (5) Managing Risk in the Treatment of Diabetic Foot Ulcers	Orange A - C	(1) Jackson (2) Guiliana (3) Lehrman (4) Schneider (5) Lehrman	2.25 (PM)
8:00 a.m. 10:30 a.m.	9:45 a.m. 12:00 p.m.	Track III: Residents Forum	Lake Mizell	Balkeran, Moderator	3.25 (S)
8:45 a.m.	2:00 p.m.	Exhibit Hall Open	Orlando I - III	N/A	N/A
9:00 a.m.	10:30 a.m.	Wright Medical RV Lab: Charcot Salvation Solutions	RV Located Outside the Hilton Orlando	N/A	N/A
9:45 a.m.	10:30 a.m.	Break in Exhibit Hall	Orlando I - III	N/A	N/A
10:30 a.m.	11:00 a.m.	Track I: Surgical Considerations with Emergent Infection Decompression or Amputation	Orlando IV - VI	Goecker	0.5 (S)
(1) 10:30 a.m. (2) 11:00 a.m. (3) 11:20 a.m. (4) 11:40 a.m.	(1) 11:00 a.m. (2) 11:20 a.m. (3) 11:40 a.m. (4) 12:00 p.m.	Track II: AAPPM Track (cont.): (1) Filling Your Reception Room with Profitable Patients (2) Managing Change in Your Office (3) Understanding Your Practice - The Importance of Data Driven "Report Cards" (4) What Needs to Happen on Monday?	Orange A - C	(1) Jackson (2) Schneider (3) Guiliana (4) Guiliana, Jackson	1.5 (PM)
11:00 a.m.	11:30 a.m.	Track I: Wounds with Exposed Bone and Tendon (Treatment of Bone and Deep Soft Tissue Infections)	Orlando IV - VI	Goecker	0.5 (S)
11:00 a.m.	12:30 p.m.	Wright Medical RV Lab: Trauma Solutions/Jones/Lisfranc/Ankle/Calcaneal	RV Located Outside the Hilton Orlando	N/A	N/A
11:30 a.m.	12:00 p.m.	Track I: Evidence Dehydrated Human Amnion Chorion Membrane in the Management of Chronic Wounds and Surgical Procedures	Orlando IV - VI	Bromley	0.5 (S)
12:00 p.m.	1:30 p.m.	Physician/Exhibitor/Assistant Luncheon	Orlando I - III	N/A	N/A
1:30 p.m.	2:00 p.m.	Track I: Residents Forum Winner	Orlando IV - VI	N/A	0.5 (S)
1:30 p.m.	2:30 p.m.	Track II: Enhancement of Pediatric & Adolescent Pes Plano Valgus with Alternative Fixation	Orange A - C	Rivera	1.0 (S)

Physicians' Schedules At-A-Glance (cont.)

Saturday, January 16, 2016 (cont.)

Start	End	Track/Course/Event	Location		CECH
1:30 p.m. 3:30 p.m.	3:00 p.m. 5:30 p.m.	Track IV: Workshop for Physicians and Assistants: Basic Life Support (BLS) for the Healthcare Provider	Lake Mizell	Strickland	N/A
2:00 p.m.	3:00 p.m.	Track I: Laws and Rules	Orlando IV - VI	Winn	1.0 (LR)
3:00 p.m.	3:30 p.m.	Break	In front of Orlando IV - VI	N/A	N/A
3:30 p.m.	5:30 p.m.	Track I: Medical Errors	Orlando IV - VI	Meritt	2.0 (ME)
7:00 p.m.	10:00 p.m.	Presidential Cocktail Reception	Orlando I	N/A	N/A

This year, FPMA is trying a new approach to honor our incoming president and executive committee. It will be an adult cocktail reception with a surprise theme. Food, Drink, and Fun will be had by all!

If you did not already sign up for the reception and would like to attend, you must come to the FPMA registration desk during regular hours and let us know that you will attend and pick up your ticket(s), which will be taken at the door the night of the event.

**Please come and celebrate with us on
Saturday, January 16 from 7:00 p.m. - 10:00 p.m.
This event is for adults only and business attire is appropriate.**

Physicians' Schedules At-A-Glance (cont.)

PLEASE NOTE: CECH information is provided for each course in the Schedules At-A-Glance, BUT YOUR SCANNED HOURS WILL DETERMINE ACTUAL CECH EARNED.

Sunday, January 17, 2016

Start	End	Course/Event	Location	Speaker(s)	CECH
7:00 a.m.	7:30 a.m.	Continental Breakfast	Foyer	N/A	N/A
7:30 a.m.	8:00 a.m.	Pearls in Bunion Surgery	Orlando IV - VI	Berens	0.5 (S)
8:00 a.m.	8:30 a.m.	1st MPJ Pathology	Orlando IV - VI	Berens	0.5 (S)
8:30 a.m.	9:00 a.m.	Plantar Plate Surgery	Orlando IV - VI	Belis	0.5 (S)
9:00 a.m.	9:30 a.m.	Lapidus (and Doing it Right)	Orlando IV - VI	Belis	0.5 (S)
9:30 a.m.	10:00 a.m.	Ankle Arthroscopy	Orlando IV - VI	Belis	0.5 (S)
10:00 a.m.	10:30 a.m.	Tibial Calcaneal Arthrodesis with Ring Fixator	Orlando IV - VI	Lambert	0.5 (S)
10:30 a.m.	11:00 a.m.	Anatomic Deltoid Ligament Repair	Orlando IV - VI	Goecker	0.5 (S)
11:00 a.m.	11:30 a.m.	Question and Answer Session	Orlando IV - VI	Block	0.5 (S)

Every SAM 2016 attendee must wear a color-coded badge, which will be issued to them upon check-in at the FPMA registration desk, in order to enter the Exhibit Hall and Lecture Hall. Attendees' spouses and children, as well as students and other guests, may obtain a Guest badge to visit the Exhibit Hall at the FPMA registration desk.

Physicians - ~~White~~ Badge
 Assistants - ~~Blue~~ Badge
 Exhibitors - ~~Green~~ Badge
 Guests - ~~Yellow~~ Badge

Keep Track of Your Continuing Education Contact Hours (CECH)

PLEASE NOTE: CECH information is provided for each course in the Schedules At-A-Glance, BUT YOUR SCANNED HOURS WILL DETERMINE ACTUAL CECH EARNED.

[illegible]

CURRENT BIENNIUM: APRIL 1, 2014 - MARCH 31, 2016
CONTINUING EDUCATION REQUIREMENTS FOR BIENNIAL LICENSURE RENEWAL
TOTAL HOURS NEEDED: 40

Mandatory (Per General Counsel for the Board):

- 1 hour Laws and Rules - Can only be used one time.
- 2 hours Medical Errors - Can only be used one time.
- 1 hour Risk Management - Up to 3 hours can be used if 3 hours of non-mandatory PM are not being counted.
- 1 hour AIDS - Required in the initial biennium and first renewal biennium; not required thereafter.
- Remainder can be made up of Scientific hours.

If you have just obtained your license (Board Rule 64B18-17.005):

- 2 hours Medical Errors
- 1 hour AIDS for this biennium and the following biennium
- 5 hours Risk Management, earned by attending one full day of a meeting of the Board of Podiatric Medicine at which disciplinary hearings are conducted.

Note: While not required, licensees may earn up to 3 hours per biennium in Practice Management.

Physicians' Schedule

Wednesday, January 13, 2016

7:00 a.m. - 5:00 p.m. SAM 2016 Registration Open

7:30 a.m. - 8:00 a.m. Continental Breakfast

Abbreviation/Color Key

S = Scientific PM = Practice Management
 RM = Risk Management LR = Laws and Rules
 ME = Medical Errors

Track I: Lectures (Orlando IV - VI)

8:00 a.m. - 9:45 a.m. **Ask the Experts (Open Forum) (S), (Bring your questions on Coding and Insurance)**
 Mark S. Block, DPM
 Private Practice
 Boca Raton, FL
 Member of FPMA

Harry Goldsmith, DPM
 Private Practice
 Cerritos, CA

9:45 a.m. - 10:30 a.m. Break

10:30 a.m. - 12:00 p.m. **Ask the Experts (Open Forum) (S) (cont.)**
 Mark S. Block, DPM
 Harry Goldsmith, DPM

12:00 p.m. - 1:00 p.m. Lunch Break (*on your own*)

OR

12:00 p.m. - 1:00 p.m. **APMA Regional Lecture Series - Non-CECH Lunch Program (Lake Mizell): A Scientifically Designed Topical Treatment Option for Toenail Onychomycosis: A Look at the Data, Including Populations of Interest**
 Stephanie C. Wu, DPM, MSc, FACFAS
 Associate Dean of Research, Professor, Department of Podiatric Surgery and Applied Biomechanics
 Dr. William M. Scholl College of Podiatric Medicine
 North Chicago, IL
(NO Continuing Education Contact Hours earned)
(No fee, Limited to 100 attendees; first-come, first-served)

1:00 p.m. - 3:00 p.m. **PQRS Update/Meaningful Use Update/HIPAA Update/ICD-10, the LCD, and Audits (S)**
 Michael L. Brody, DPM
 Private Practice
 Northport, NY

3:00 p.m. - 3:30 p.m. Break

3:30 p.m. - 5:30 p.m. **Improved Patient Care Through Lawsuit Protection and Prevention for Podiatric Physicians (PM)**
 G. Kent Mangelson, CFP
 Author, Senior Advisor
 Jacksonville, FL

WRIGHT MEDICAL RV LABS

These will take place Thursday through Saturday during SAM 2016. Each lab session will hold up to six surgeons (three per station) and they are all expected to fill up quickly. SAM attendees can register for the various labs on-site beginning Wednesday, January 13, 2016 at 2:00 p.m. at the Wright Medical RV, located outside the Hilton Orlando. Space is limited, there is no fee, and attendance of the labs earns NO CECH.

Physicians' Schedule (cont.)

Wednesday, January 13, 2016 (cont.)

Track II: Lectures (Lake Concord)

8:00 a.m. - 9:45 a.m.	Lengthening vs. Masquele vs. Free Fibula/Free Functional Muscle Transfers/When to Say When and Amputate (S) <i>Christopher Bibbo, DO, FACS</i> <i>Sacred Heart Medical Group</i> <i>Pensacola, FL</i>	1:00 p.m. - 2:00 p.m.	Transpositional Soleus Muscle Flap/Combined Osseous and Muscle Flap (S) <i>Edgardo Rodriguez-Callaz, DPM</i>
9:45 a.m. - 10:30 a.m.	Break	2:00 p.m. - 3:00 p.m.	Charcot Arthropathy: Is This Limb Salvageable? Soft Tissue Reconstruction of the Diabetic Foot (S) <i>Ryan J. Pereira, DPM, FACFAS</i> <i>Private Practice</i> <i>St. Augustine, FL</i> <i>Member of FPMA</i>
10:30 a.m. - 11:30 a.m.	Neuropathic/Immuno Compromised Ankle Fractures Lengthening vs. Transport in as a Salvage Procedure (S) <i>Luis E. Marin, DPM</i> <i>Private Practice</i> <i>Hialeah, FL</i> <i>Member of FPMA</i>	3:00 p.m. - 3:30 p.m.	Break
11:30 a.m. - 12:00 p.m.	Indications for Reverse Muscle Flaps (S) <i>Edgardo Rodriguez-Callaz, DPM</i> <i>Private Practice</i> <i>Chicago, IL</i>	3:30 p.m. - 5:00 p.m.	Tibia-Calcaneal Arthrodesis With Ring Fixation/Tibial Lengthening in Sickle Cell Patient/External Fixation Tips, Tricks and Pearls (S) <i>Mark A. Lambert, DPM</i> <i>Private Practice</i> <i>Pensacola, FL</i> <i>Member of FPMA</i>
12:00 p.m. - 1:00 p.m.	Lunch Break (on your own)		
OR			
12:00 p.m. - 1:00 p.m.	<u>APMA Regional Lecture Series - Non-CECH Lunch Program (Lake Mizell):</u> A Scientifically Designed Topical Treatment Option for Toenail Onychomycosis: A Look at the Data, Including Populations of Interest <i>Stephanie C. Wu, DPM, MSc, FACFAS</i> <i>Associate Dean of Research, Professor, Department of Podiatric Surgery and Applied Biomechanics</i> <i>Dr. William M. Scholl College of Podiatric Medicine</i> <i>North Chicago, IL</i> (NO Continuing Education Contact Hours earned) (No fee, Limited to 100 attendees; first-come, first-served)		

Physicians' Schedule (cont.)

Thursday, January 14, 2016

7:00 a.m. - 5:00 p.m. SAM 2016 Registration Open

7:15 a.m. - 7:45 a.m. Continental Breakfast

8:45 a.m. - 5:00 p.m. Exhibit Hall Open

WRIGHT MEDICAL RV LABS

These will take place Thursday through Saturday during SAM 2016. Each lab session will hold up to six surgeons (three per station) and they are all expected to fill up quickly. SAM attendees can register for the various labs on-site beginning Wednesday, January 13, 2016 at 2:00 p.m. at the Wright Medical RV, located outside the Hilton Orlando. Space is limited, there is no fee, and attendance of the labs earns NO CECH.

9:00 a.m. - 10:30 a.m.

12:00 p.m. - 1:30 p.m.

4:30 p.m. - 6:00 p.m.

Flatfoot Recon/Sports Injuries

Flatfoot Recon/Sports Injuries

Forefoot Solutions/Bunions/Hammertoes/Lapidus

Track I: Lectures (Orlando IV - VI)

7:45 a.m. - 8:45 a.m. **Lyme Disease (S)**
Neil E. Mastropietro, DPM
Private Practice
Sarasota, FL
Member of FPMA

8:45 a.m. - 9:45 a.m. **APMA Dermatology Lecture: 2016 Update on Dermatological Conditions (S)**
Tracey C. Vlahovic, DPM,
FFPM RCPS (Glasg)
Temple University School of
Podiatric Medicine
Philadelphia, PA

9:45 a.m. - 10:30 a.m. Break in Exhibit Hall

10:30 a.m. - 11:00 a.m. **Collagen, Collagen, Collagen: What is the Difference? (S)**
Jeffrey C. Karr, DPM, CWS,
ACCPPS, FAPWCA, FCCWS
Private Practice
Lakeland, FL
Member of FPMA

11:00 a.m. - 11:30 a.m. **Which Bone Void Filler Should I Use? (S)**
Jeffrey C. Karr, DPM, CWS,
ACCPPS, FAPWCA, FCCWS

11:30 a.m. - 12:00 p.m. **Osteomyelitis: What's New in Treatment Options? (S)**
Jeffrey C. Karr, DPM, CWS,
ACCPPS, FAPWCA, FCCWS

11:30 a.m. - 12:00 p.m. Exhibitors (Only) Luncheon
12:00 p.m. - 1:30 p.m. Physicians Luncheon
(Voucher Required)

12:00 p.m. - 1:30 p.m. **Non-CECH Lunch Program (Lake Mizell):**
Shifting the Antimicrobial
Paradigm - A Novel Purified
Collagen and Antimicrobial
Technology for Wound
Management
Jeffrey C. Karr, DPM, CWS,
ACCPPS, FAPWCA, FCCWS
**(NO Continuing Education
Contact Hours earned)**
(No fee, Limited to 50
attendees; first-come,
first-served)

1:30 p.m. - 2:15 p.m. **University of Florida Lectures: Site Infections (S)**
Kristin Lynn Strannigan, DPM
University of Florida Health
Jacksonville, FL

2:15 p.m. - 3:00 p.m. **Acute Charcot Foot (S)**
Kristin Lynn Strannigan, DPM

3:00 p.m. - 3:45 p.m. Break in Exhibit Hall

(Track I Continued on page 23)

Physicians' Schedule (cont.)

Thursday, January 14, 2016 (cont.)

Track I: Lectures (Orlando IV - VI) *cont.*

University of Florida Lectures (cont.):

3:45 p.m. - 4:15 p.m.

Cost Analysis and Review of the Latest Hammertoe Implants (S)

*Jason A. Piraino, DPM
Associate Professor
Department of Orthopaedic Surgery & Rehabilitation,
University of Florida
Jacksonville, FL*

4:15 p.m. - 5:15 p.m.

Bone Tumors (S)

*Hud Berrey, MD
Professor, Department of
Orthopaedic Surgery &
Rehabilitation;
Medical Director, UF Bone
and Joint Center - Emerson
University of Florida
Jacksonville, FL*

Track II: Lectures (Orange A - C)

7:45 a.m. - 9:45 a.m.

Biomechanics (S)

*Scott Alan Spencer, DPM
Private Practice
Independence, OH*

Why You SHOULD be Doing Biomechanical Exams (S)

Scott Alan Spencer, DPM

Does your Biomechanics Exam Match Your Treatment Plan? (S)

Scott Alan Spencer, DPM

9:45 a.m. - 10:30 a.m.

Break in Exhibit Hall

10:30 a.m. - 11:30 a.m.

Comprehensive H&P of the Pediatric Patient (S)

*Louis J. DeCaro, DPM
Private Practice
West Hatfield, MA*

11:30 a.m. - 12:00 p.m.

New Therapies in the Management of Common Skin Infections of the Foot (S)

*Ivan Bistrow, PhD, FCPodMed,
FFPM, RCPS (Glasg)
Senior Lecturer, University of
Southampton
Faculty of Sciences
Southampton*

11:30 a.m. - 12:00 p.m.

Exhibitors (Only) Luncheon

12:00 p.m. - 1:30 p.m.

**Physicians Luncheon
(Voucher Required)**

12:00 p.m. - 1:30 p.m.

Non-CECH Lunch Program (Lake Mizell):

Shifting the Antimicrobial Paradigm - A Novel Purified Collagen and Antimicrobial Technology for Wound Management

*Jeffrey C. Karr, DPM, CWS,
ACCPSS, FAPWCA, FCCWS
**(NO Continuing Education
Contact Hours earned)**
**(No fee, Limited to 50
attendees; first-come,
first-served)***

1:30 p.m. - 2:00 p.m.

ASPM Lecture Series:

Proper Positioning for Ultrasonic Analysis of the Foot and Ankle (S)

*Albert A. Armstrong, DPM
Barry University School of
Podiatric Medicine
Miami Shores, FL
Member of FPMA*

2:00 p.m. - 2:30 p.m.

Biopsy and Pathology of Common Skin Disorders of the Foot and Leg (S)

*Steve A. McClain, MD
Private Practice
Smithtown, NY*

(Track II Continued on page 24)

Physicians' Schedule (cont.)

Thursday, January 14, 2016 (cont.)

Track II: Lectures (Orange A - C) *cont.*

2:30 p.m. - 3:00 p.m.	<u>ASPM Lecture Series (Cont.):</u> No Right or Wrong Controversies in Podiatric Medicine (S) <i>Elliot T. Udell, DPM</i> <i>Private Practice</i> <i>Hicksville, NC</i>	3:45 p.m. - 4:45 p.m.	<u>ASPM Lecture Series (Cont.):</u> The Use of Dermascopy in the Evaluation of Malignant Skin Disorders (S) <i>Ivan Bistrow, PhD, FCPodMed, FFPM, RCPS (Glasg)</i>
3:00 p.m. - 3:45 p.m.	Break in Exhibit Hall	4:45 p.m. - 5:15 p.m.	The Podiatric Examination of the Newborn to Three Year Old (S) <i>Louis J. DeCaro, DPM</i>

Track III: Workshop (Lake Sheen)

2:00 p.m. - 3:00 p.m.	"Eyes on" Gait Analysis: The Secrets to How Watching Your Patient Walk for 10 Seconds Tells You So Much About Them Biomechanically (S) <i>Louis J. DeCaro, DPM</i>	3:00 p.m. - 3:45 p.m.	Break in Exhibit Hall
-----------------------	--	-----------------------	-----------------------



**Come by booth
#168 to learn more**

Why Agent Medical?

- > Focused on solving problems faced by foot and ankle reconstructive surgeons.
- > Overcoming anatomical and biomechanical challenges using solid principles of design.
- > Dedicated to improving patient outcomes and reducing readmissions.

ArthroBridge™ Hammertoe System



Patent pending

Addressing the challenges of anatomy and biomechanics for hammertoe fusions using solid principles and a simple design...

- > Rigid Component Fixation
- > Superior Joint Compression
- > Optimum Bone Apposition
- > Versatile Sizing Options
- > Primary and Revision Applications
- > Single-Use Instrument Kit



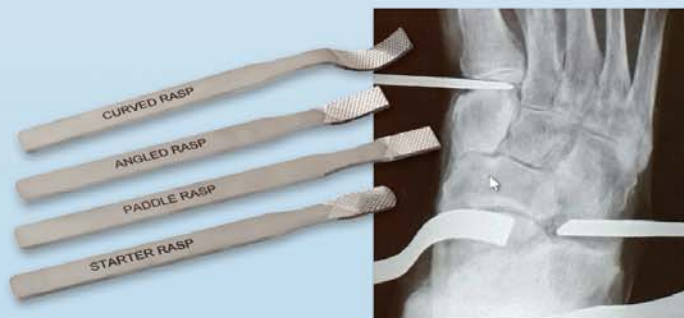
ArthroMate™ Rear Foot Rasping System



Patent pending

Reducing the effort and expense in preparing joint surfaces for lower extremity fusions...

- > Reduces Surgery Time
- > Prepares Mating Bone Surfaces
- > Aggressive Multi-Planer Cutting Design
- > Multiple Anatomically-Shaped Options



Physicians' Schedule (cont.)

Friday, January 15, 2016

7:00 a.m. - 5:00 p.m. SAM 2016 Registration Open

7:00 a.m. - 7:30 a.m.

Continental Breakfast

8:45 a.m. - 5:00 p.m.

Exhibit Hall Open

WRIGHT MEDICAL RV LABS

These will take place Thursday through Saturday during SAM 2016. Each lab session will hold up to six surgeons (three per station) and they are all expected to fill up quickly. SAM attendees can register for the various labs on-site beginning Wednesday, January 13, 2016 at 2:00 p.m. at the Wright Medical RV, located outside the Hilton Orlando. Space is limited, there is no fee, and attendance of the labs earns NO CECH.

9:00 a.m. - 10:30 a.m.

Forefoot Solutions/Bunions/Hammertoes/Lapidus

12:00 p.m. - 1:30 p.m.

Forefoot Solutions/Bunions/Hammertoes/Lapidus

4:30 p.m. - 6:00 p.m.

Trauma Solutions/Jones/Lisfranc/Ankle/Calcaneal

Track I: Lectures (Orlando IV - VI)

7:30 a.m. - 8:15 a.m.

The Podiatrists Role in the Team Approach to Limb Salvage (S)

*Alan J. Block, DPM
Private Practice
Gahanna, OH*

8:15 a.m. - 9:00 a.m.

New Concepts and Myths in Treating and Evaluating Osteomyelitis of the Lower Extremity (S)

Alan J. Block, DPM

9:00 a.m. - 9:45 a.m.

Acral Lentiginous Melanoma; What Sets it Apart? (S)

*Bradley W. Bakotic, DPM, DO
Bako Integrated Physician Solutions
Alpharetta, GA*

9:45 a.m. - 10:30 a.m.

Break in Exhibit Hall

10:30 a.m. - 12:00 p.m.

FPMA General Membership Meeting

11:30 a.m. - 12:00 p.m.

Exhibitors (Only) Luncheon Physicians Luncheon (Voucher Required)

12:00 p.m. - 1:30 p.m.

1:30 p.m. - 2:00 p.m.

Interesting Case Studies in Podiatric Medicine; 2016 Update (S)

Bradley W. Bakotic, DPM, DO

2:00 p.m. - 3:00 p.m.

Examining the Potential of Collagen Powders in the Diabetic Foot (S)

*Jonathan E. Moore, DPM
Private Practice
Somerset, KY*

3:00 p.m. - 3:45 p.m.

Break in Exhibit Hall

3:30 p.m. - 4:00 p.m.

APMA Update (No Continuing Education Contact Hours earned)

4:00 p.m. - 6:00 p.m.

PICA 2015 Risk Management Lecture - Doctor-Patient Communication: Improving Patient and Physician Satisfaction (RM)

*Ronald L. Hofeldt, MD
Medical Director and Consultant for Wellness Development Group, Oregon*

Physicians' Schedule (cont.)

Friday, January 15, 2016 (cont.)

Track II: Lectures (Orange A - C)

7:30 a.m. - 8:15 a.m. **A Topical Medication Toolbox for Challenging Podiatry Cases (S)**
Aaron Ben Pearl, DPM
Private Practice
Arlington, VA

8:15 a.m. - 9:00 a.m. **Chronic Pain (S)**
Marlene Reid, DPM
Private Practice
Naperville, NY

9:00 a.m. - 9:45 a.m. **Stem Cells in Wound Healing (S)**
Matthew J. Regulski, DPM
Private Practice
Manahawkin, NJ

9:45 a.m. - 10:30 a.m. **Break in Exhibit Hall**

10:30 a.m. - 12:00 p.m. **FPMA General Membership Meeting**

11:30 a.m. - 12:00 p.m. **Exhibitors (Only) Luncheon**
12:00 p.m. - 1:30 p.m. **Physicians Luncheon**
(Voucher Required)

1:30 p.m. - 2:00 p.m. **Tendonosis/Fasciosis (S)**
Marlene Reid, DPM

2:00 p.m. - 2:30 p.m. **Management of Diabetic Foot Infections (S)**
Robert G. Frykberg, DPM
Phoenix VA Health Care System
Phoenix, AZ

2:30 p.m. - 3:00 p.m. **The Neuroischemic Foot – Diagnosis and Management (S)**
Robert G. Frykberg, DPM

3:00 p.m. - 3:45 p.m. **Break in Exhibit Hall**

3:30 p.m. - 4:00 p.m. **APMA Update**
(No Continuing Education Contact Hours earned)

4:00 p.m. - 6:00 p.m. **PMAF 2015 Risk Management Lecture - DOH: Friend or Foe? (RM)**
Ronald E. Bush, Esquire
Bush, Graziano, Rice & Platter
Tampa, FL

Track III: Workshop (Lake Mizell)

2:30 p.m. - 4:30 p.m. **Dermatology Workshop**
(\$50 fee, Limited to 40 attendees)
Podiatric Dermatology for Today's Lower Extremity Clinician; A "Hands-On" Workshop (S)
Bradley W. Bakotic, DPM, DO

Physicians' Schedule (cont.)

Saturday, January 16, 2016

6:45 a.m. - 2:00 p.m. SAM 2016 Registration Open

7:15 a.m. - 7:45 a.m. Continental Breakfast

8:45 a.m. - 2:00 p.m. Exhibit Hall Open

WRIGHT MEDICAL RV LABS

These will take place Thursday through Saturday during SAM 2016. Each lab session will hold up to six surgeons (three per station) and they are all expected to fill up quickly. SAM attendees can register for the various labs on-site beginning Wednesday, January 13, 2016 at 2:00 p.m. at the Wright Medical RV, located outside the Hilton Orlando. Space is limited, there is no fee, and attendance of the labs earns NO CECH.

9:00 a.m. - 10:30 a.m. Charcot Salvation Solutions

11:00 a.m. - 12:30 p.m. Trauma Solutions/Jones/Lisfranc/Ankle/Calcaneal

Track I: Lectures (Orlando IV - VI)

7:30 a.m. - 9:45 a.m.

AAPSM Lecture Series (S): Hallux Limitus in the Athlete

*Brian W. Fullem, DPM
Fellow of the AAPSM, Board
Certified in Foot Surgery
Private Practice
Clearwater, FL
Member of FPMA*

Alternative Exercises for the Injured Athlete

*Roy Clint Laird, DPM
Private Practice
Englewood, FL
Member of FPMA*

Youth Sports, Pediatric Injuries and Burnout

*Matthew B. Werd, DPM
Private Practice
Lakeland, FL
Member of FPMA*

Panel Discussion – Two to Three Case Presentations

*Brian W. Fullem, DPM
Roy Clint Laird, DPM
Matthew B. Werd, DPM*

9:45 a.m. - 10:30 a.m. Break in Exhibit Hall

10:30 a.m. - 11:00 a.m. Surgical Considerations with Emergent Infection Decompression or Amputation (S)

*Robert M. Goecker, DPM
Private Practice
Sarasota, FL
Member of FPMA*

11:00 a.m. - 11:30 a.m.

Wounds With Exposed Bone and Tendon (Treatment of Bone and Deep Soft Tissue Infections) (S)

Robert M. Goecker, DPM

11:30 a.m. - 12:00 p.m.

Evidence Dehydrated Human Amnion Chorion Membrane in the Management of Chronic Wounds and Surgical Procedures (S)

*Christopher K. Bromley, DPM
Private Practice
Poughkeepsie, NY*

11:30 a.m. - 12:00 p.m.
12:00 p.m. - 1:30 p.m.

Exhibitors (Only) Luncheon Physicians Luncheon Assistants Luncheon (Voucher Required)

1:30 p.m. - 2:00 p.m.

Residents Forum Winner (S)

2:00 p.m. - 3:00 p.m.

Laws and Rules (LR)

*Jason D. Winn, Esquire
Private Law Practice
Tallahassee, FL
General Counsel for FPMA*

3:00 p.m. - 3:30 p.m.

Break

3:30 p.m. - 5:30 p.m.

Medical Errors (ME)

*Stephen M. Meritt, DPM
Private Practice
Faculty, Orthopaedic Dept.,
Shands, University of Florida
Part-Time Attending Podiatric
Physician,
Veterans Administration
Jacksonville, FL
Member of FPMA*

Physicians' Schedule (cont.)

Saturday, January 16, 2016 (cont.)

Track II: Lectures (Orange A - C)

7:30 a.m. - 7:50 a.m.	AAPPM Track (PM): Is There Just One Thing You Can Do to Guarantee Your Success? <i>Mr. Rem Jackson Top Practices, LLC Lititz, PA</i>
7:50 a.m. - 8:20 a.m.	Emotionally "React" or Intellectually "Respond" - How to Use Simple Micro- economic Principles to Guide Your Business Decisions <i>John V. Guiliana, DPM, MS Private Practice Hackettstown, NJ</i>
8:20 a.m. - 8:50 a.m.	Meaningful Use in 2016 <i>Jeffrey D. Lehrman, DPM Private Practice Springfield, PA</i>
8:50 a.m. - 9:25 a.m.	The Internet is Dead... Long Live the Internet! <i>Andrew J. Schneider, DPM Private Practice Houston, TX</i>
9:25 a.m. - 9:45 a.m.	Managing Risk in the Treatment of Diabetic Foot Ulcers <i>Jeffrey D. Lehrman, DPM</i>

9:45 a.m. - 10:30 a.m.	Break in Exhibit Hall
10:30 a.m. - 11:00 a.m.	AAPPM Track (PM) (cont.) Filling Your Reception Room with Profitable Patients <i>Mr. Rem Jackson</i>
11:00 a.m. - 11:20 a.m.	Managing Change in Your Office <i>Andrew J. Schneider, DPM</i>
11:20 a.m. - 11:40 a.m.	Understanding Your Practice - The Importance of Data Driven "Report Cards" <i>John V. Guiliana, DPM, MS</i>
11:40 a.m. - 12:00 p.m.	What Needs to Happen on Monday? <i>John V. Guiliana, DPM, MS Mr. Rem Jackson</i>
11:30 a.m. - 12:00 p.m. 12:00 p.m. - 1:30 p.m.	Exhibitors (Only) Luncheon Physicians Luncheon Assistants Luncheon (Voucher Required)
1:30 p.m. - 2:30 p.m.	Enhancement of Pediatric & Adolescent Pes Plano Valgus with Alternative Fixation (S) <i>Michael A. Rivera, DPM Private Practice Miami, FL Member of FPMA</i>

Track III: Residents Forum (Lake Mizell)

8:00 a.m. - 9:45 a.m.	Residents Forum (S) <i>Joanne N. Balkaran, DPM, Moderator Private Practice Mt. Dora, FL Member of FPMA</i>
9:45 a.m. - 10:30 a.m.	Break in Exhibit Hall
10:30 a.m. - 12:00 p.m.	Residents Forum (S) (Cont.)

Track IV: Workshop (Lake Mizell)

1:30 p.m. - 3:00 p.m.	Basic Life Support (BLS) for the Healthcare Provider (S) (Formerly, CPR Certification Course) For Physicians and Assistants (\$25 Fee, Limited to 20 attendees) <i>Kimberly Strickland, ARNP</i>
3:00 p.m. - 3:30 p.m.	Break
3:30 p.m. - 5:30 p.m.	Basic Life Support (BLS) for the Healthcare Provider (S) (cont.)

7:00 p.m. - 10:00 p.m. Presidential Cocktail Reception (Ticket Required) (Orlando I)

Physicians' Schedule (cont.)

Sunday, January 17, 2016

7:00 a.m. - 7:30 a.m.

Continental Breakfast

Lectures (Orlando IV - VI)

7:30 a.m. - 8:00 a.m. Pearls in Bunion Surgery (S)

*Thomas A. Berens, DPM
Private Practice
Gainesville, FL
Member of FPMA*

8:00 a.m. - 8:30 a.m. 1st MPJ Pathology (S)

Thomas A. Berens, DPM

8:30 a.m. - 9:00 a.m. Plantar Plate Surgery (S)

*Andrew M. Belis, DPM
Private Practice
Fort Myers, FL
Member of FPMA*

9:00 a.m. - 9:30 a.m. Lapidus (and Doing it Right) (S)

Andrew M. Belis, DPM

9:30 a.m. - 10:00 a.m. Ankle Arthroscopy (S)

Andrew M. Belis, DPM

10:00 a.m. - 10:30 a.m. Tibial Calcaneal Arthrodesis with Ring Fixator (S)

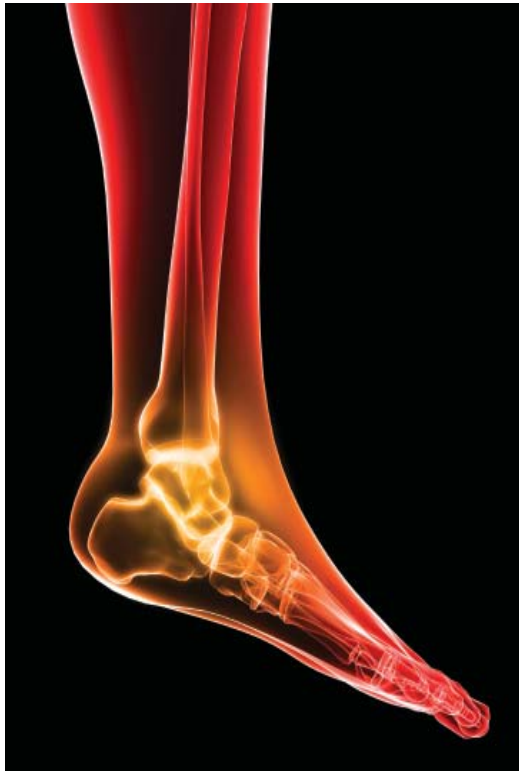
*Mark Andrew Lambert, DPM
Private Practice
Pensacola, FL
Member of FPMA*

10:30 a.m. - 11:00 a.m. Anatomic Deltoid Ligament Repair (S)

Robert M. Goecker, DPM

11:00 a.m. - 11:30 a.m. Question and Answer Session (S)

Mark S. Block, DPM



Educational Program Objectives

AT THE CONCLUSION OF THIS PROGRAM, ATTENDEES WILL BE ABLE TO:

- evaluate complex foot and ankle deformities and recognize proper treatment protocols in limb salvage;
- better appreciate the use of advanced frame techniques in foot and ankle surgery;
- gain updated knowledge of Lyme disease;
- understand the biomechanics of various lower extremity disorders and the role of proper evaluation and treatment;
- increase knowledge of bone tumors;
- appreciate the latest advances in wound care in the lower extremity;
- increase level of understanding of pain management and latest treatment protocols;
- appreciate the systemic aspects of diabetes mellitus, including prevalence, diagnosis and latest treatment protocols;
- update their knowledge of dermatological conditions that present in lower extremity, including knowledge of melanoma of the foot;
- gain updated knowledge of treatment of athletes;
- improve their knowledge of the latest treatments for foot and ankle conditions that have an evidence based treatment protocol; and
- understand the importance of proper ethical decisions in patient care to reduce medical errors.

Assistants' Schedule

Friday, January 15, 2016

7:00 a.m. - 5:00 p.m. Registration Open

Track I: Front Office Assistants/Back Office Assistants (Lake Eola)

- 1:30 p.m. - 2:30 p.m. **The Role of the Podiatric Medical Assistant in the Management of the Non-Adhering Patient**
Elliott T. Udell, DPM
- 2:30 p.m. - 3:00 p.m. **Podiatry Office Compliance Issues**
Faith Begley, MHRDA, PHR, SHRM-CP
- 3:00 p.m. - 3:45 p.m. Break in Exhibit Hall
- 3:45 p.m. - 4:15 p.m. **Your Patient's Drugs Can Make You Feel Better**
Peter M. Mason, DPM, Rph
- 4:15 p.m. - 5:00 p.m. **Fun with Dr. Blass**
Barry C. Blass, DPM

Saturday, January 16, 2016

6:45 a.m. - 2:00 p.m. Registration Open

Track I: AAPPM Track for Front Office Assistants/Back Office Assistants With Physicians (Orange A - C)

- 7:30 a.m. - 7:50 a.m. **Is There Just One thing You Can Do to Guarantee Your Success?**
Mr. Rem Jackson
- 7:50 a.m. - 8:20 a.m. **Emotionally "React" or Intellectually "Respond" - How to Use Simple Microeconomic Principles to Guide Your Business Decisions**
John V. Guiliana, DPM, MS
- 8:20 a.m. - 8:50 a.m. **Meaningful Use in 2016**
Jeffrey D. Lehrman, DPM

Saturday, January 16, 2016 (cont.)

- 8:50 a.m. - 9:25 a.m. **The Internet is Dead . . . Long Live the Internet!**
Andrew J. Schneider, DPM
- 9:25 a.m. - 9:45 a.m. **Managing Risk in the Treatment of Diabetic Foot Ulcers**
Jeffrey D. Lehrman, DPM

9:45 a.m. - 10:30 a.m. Break in Exhibit Hall

AAPPM Track (cont.)

- 10:30 a.m. - 11:00 a.m. **Filling Your Reception Room with Profitable Patients**
Mr. Rem Jackson
- 11:00 a.m. - 11:20 a.m. **Managing Change in Your Office**
Andrew J. Schneider, DPM
- 11:20 a.m. - 11:40 a.m. **Understanding Your Practice - The Importance of Data Driven "Report Cards"**
John V. Guiliana, DPM, MS
- 11:40 a.m. - 12:00 p.m. **What Needs to Happen on Monday?**
John V. Guiliana, DPM, MS
Mr. Rem Jackson

12:00 p.m. - 1:30 p.m. **Physicians Luncheon
Assistants Luncheon
(Voucher Required)**

Track II: Front Office Assistants/Back Office Assistants (Lake Eola)

- 1:30 p.m. - 3:00 p.m. **Increasing Your Value and Staying Out of Trouble**
Barry C. Blass, DPM
- 3:00 p.m. - 3:30 p.m. Break
- 3:30 p.m. - 5:00 p.m. **ASPMA – How You Can Be More!**
Jessica A. DeLorenzo, PMAC

Assistants' Schedule (cont.)

Saturday, January 16, 2016 (cont.)

6:45 a.m. - 2:00 p.m. Registration Open

Track III: X-Ray Assistants - Initial and Recertification (Orange D)

7:30 a.m. - 9:45 a.m. X-Ray Lectures*
Albert V. Armstrong, DPM

9:45 a.m. - 10:15 a.m. Break in Exhibit Hall

10:15 a.m. - 12:00 p.m. X-Ray Lectures (cont.)

12:00 p.m. - 1:00 p.m. Assistant Luncheon Outside the Lecture Hall (*Voucher Required*)

1:00 p.m. - 3:00 p.m. X-Ray Lectures (cont.)

3:00 p.m. - 3:30 p.m. Break

3:30 p.m. - 5:30 p.m. Medical Errors with Physicians (Orlando IV - VI)
Stephen M. Meritt, DPM

Track IV: Workshop for Physicians and Assistants (Lake Mizell)

1:30 p.m. - 3:00 p.m. Basic Life Support (BLS) for the Healthcare Provider (*Formerly, CPR Certification Course*)
Kimberly Strickland, ARNP
(\$25 Fee, Limited to 20 attendees)

3:00 p.m. - 3:30 p.m. Break

3:30 p.m. - 5:30 p.m. Basic Life Support (BLS) for the Healthcare Provider (*cont.*)

Sunday, January 17, 2016

EXAMINATION - For Initial Licensure Only (Lake Eola/Lake Mizell)

8:30 a.m. - 10:00 a.m. Podiatric X-Ray Assistants Examination

(Those Assistants who will be obtaining their PXA License for the first time must sit for this examination. Assistants who already have a PXA License DO NOT HAVE TO SIT FOR THIS EXAMINATION.)



*** All X-Ray Assistants - for Initial or Relicensure - must scan into the X-Ray lecture hall (Orange D) at 7:30 a.m. and out of the X-Ray lecture hall at 3:00 p.m. when the X-Ray lectures end. You must then scan into the Medical Errors lecture hall (Orlando IV-VI) at 3:30 p.m. and out of the Medical Errors lecture hall at 5:30 p.m. when the Medical Errors lecture ends. Failure to scan for the 8 hours disqualifies you to sit for the examination on Sunday (for Initial Licensure only). If you fail to scan for the 8 hours (for Relicensure only), this course will not qualify for you to renew your license for the new biennium, April 1, 2016 - March 31, 2018.**

SAM 2016 Exhibitors

SAM 2016 EXHIBIT HALL HOURS

Thursday, January 14, 2016

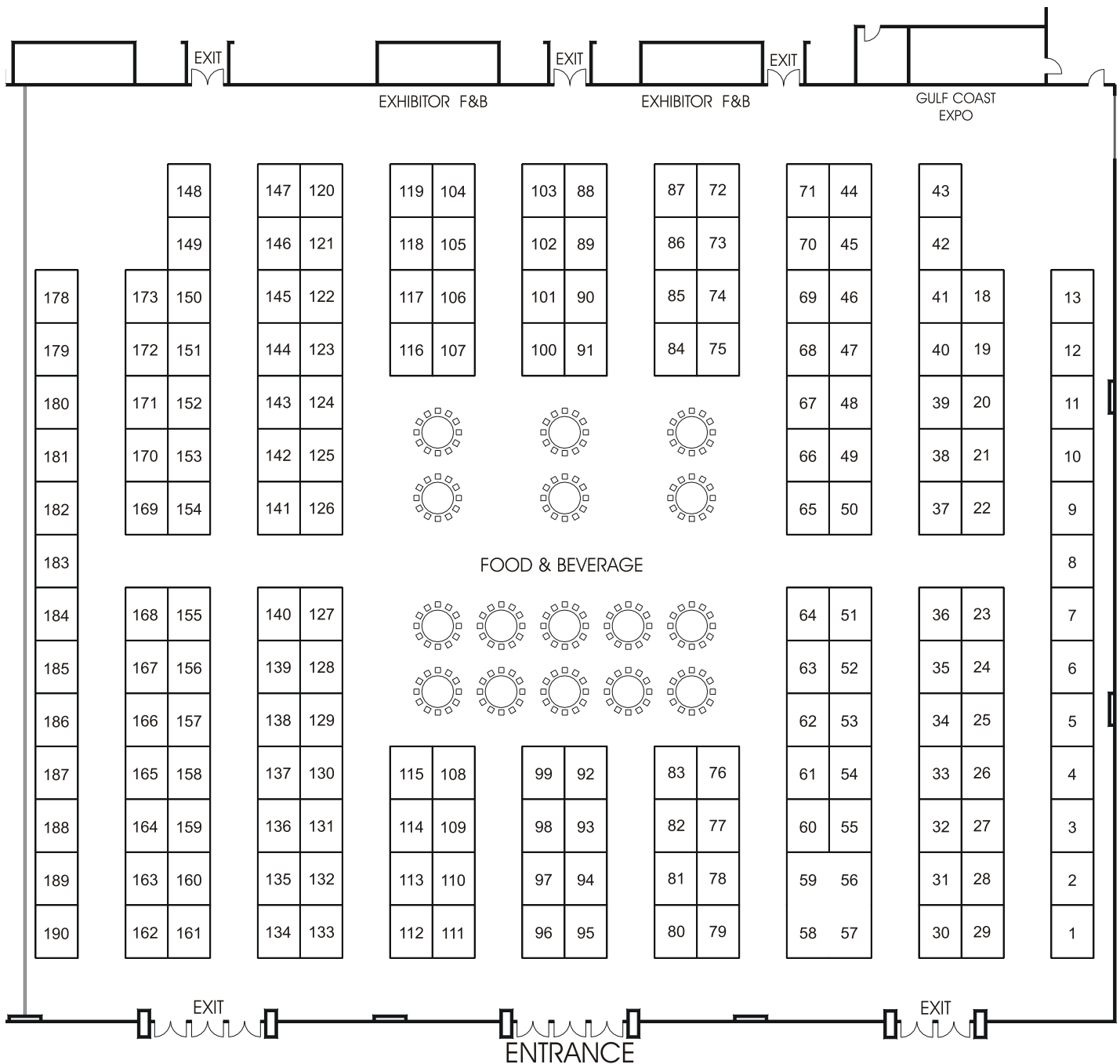
8:45 AM – 5:00 PM

Friday, January 15, 2016

8:45 AM – 5:00 PM

Saturday, January 16, 2016

8:45 AM – 2:00 PM



SAM 2016 Exhibitors (cont.)

SAM 2016 Exhibitors in Alphabetical Order

Company Name	Booth #	Company Name	Booth #
3Gen Inc.	105	Doctor's Equipment Specialist	186
ACell, Inc.	163	Doctor's Toy Store, Inc.	13
Advanced Tissue	138	DoctorsInternet.com	77
Aetrex Worldwide	84	DPM-Preferred - A Datatrace Company	23
Agent Medical, LLC	168	Dr. Jill's Foot Pads, Inc.	96
American Academy of Podiatric Practice Management	20	Dr.'s REMEDY Nail Care	68
American Board of Multiple Specialties in Podiatry	140	Earthwalk Orthotics, Inc.	161
Amerx Health Care Corporation	82-83	Edser Labs	9
Amniox Medical	38	Elorac, Inc.	87
Angelini Pharma Inc.	166	Enovative Technologies	50
Anodyne	143	Erchonia Corporation	73-74
Arthrex, Inc.	1	European Footcare Supply	60
Arthrosurface	37	Everfeet Orthotics, Inc.	137
Bako Integrated Physician Solutions	56-59	Everwell Specialty Pharmacy	90-91
Barry University School of Podiatric Medicine	12	Feel Good, Inc.	27
Bianco Brothers Instruments	86	Feinberg Financial Group	147
BioPro, Inc.	135	Florida Department of Health	5
BioSkin	88	Florida Medical Equipment Sales	33
Bioventus, LLC	178	Florida PDMP Foundation, Inc.	3
Blaine Labs, Inc.	47-48	Footmaxx	29
Blue Orchid Marketing	139	Genius Solutions, Inc.	70
BME - BioMedical Enterprises, Inc.	52	Gensco Labs	2
Bonapeda Enterprises, LLC	145	Gibraltar Coins & Precious Metals, Inc.	89
Brown & Brown, Inc.	97	Gill Podiatry	94-95
CaerVision Podiatry Network	189	Gordon Laboratories	80
CMSI Wound Care	40	Gramedica	120
Corinthian Reference Lab	162	gSource, LLC	99
CrossRoads Extremity Systems	32	Hapad, Inc.	160
CryoDerm	125	Hawaiian Moon	123
Cryoprobe	126	Henry Schein Foot & Ankle	100
Cutting Edge Laser Technologies	112	Hollister Woundcare	155
Darco International	31	Hyperion Medical	7
Delta Surgical Instruments	122	IMS Medical Equipment, LLC	157
Derma Sciences, Inc.	114	In2Bones USA	103
DG Instruments	92	Integra Life Sciences	110-111
DIA-FOOT	127	I-Runner Shoes	72
DJO Global	108-109	JM Orthotics	81

(List of Exhibitors Continued on page 36)

SAM 2016 Exhibitors (cont.)

SAM 2016 Exhibitors in Alphabetical Order (cont.)			
Company Name	Booth #	Company Name	Booth #
JMS Med Supply	148	Physician Claim Corporation	62
JSB Orthotics & Medical Supply, Inc.	36	PICA	78-79
Koven Technology, Inc.	104	PMAF/John Yurconic Agency	130
Lauderdale Pathology	35	Podiatry Content Connection	169
Light Age Inc.	150	PowerStep	116
LightForce Therapy Lasers by LiteCure Medical	55	Quell by NeuroMetrix	49
McClain Laboratories	98	Redi-Thotics	54
McKesson Patient Care Solutions	144	RYBO Medical, Inc.	158
Medical Wave	181	SafeStep	85
MediTouch EHR - HealthFusion Inc.	136	Sammy Systems	128-129
MedMal Direct Insurance Company	151	SAS Shoemakers	124
MedPro Group	75	Smart Pharmacy	22
Merz North America, Inc.	24	Smith & Nephew	121
Miami Leather Co.	30	Smith & Nephew (Trauma & Extremities)	41
Mile High Orthotics Lab	93	Smith & Nephew (Wound Care)	61
MiMedx	69	Sole Supports, Inc.	156
Moore Medical LLC	134	SOLO Laboratories, Inc.	133
MPM Medical, Inc.	71	Special Olympics Florida	6
MTBC	44	Spenco Medical	152
MTI, Inc.	76	Stratus Pharmaceuticals Inc.	117
Multi Radiance Medical	39	Stryker Foot & Ankle	153-154
Nestle Health Sciences - PamLab, Inc.	28	Support the Foot	8
Neurogenx	119	SureFit	53
Neurvasia	159	Temple University School of Podiatric Medicine	4
New Step	33	The Goldfarb Foundation	131
Nolaro24, LLC	190	The Podiatree Company	101-102
NuTech	170	The Tetra Corporation	65-66
Organogenesis, Inc.	183-184	TLD Systems	132
Ortho Max, Inc.	172-173	TRAKnet Solutions	185
Orthofeet, Inc.	21	Trilliant Surgical	113
OrthoScan	118	Universal Imaging	51
Osiris Therapeutics Inc.	34	Valeant Pharmaceuticals	141-142
OsteoMed, LLC	182	Vionic Group, LLC	63-64
Paragon 28	167	Wright Medical Technology, Inc.	106-107
PharmaDerm, a division of Fougere Pharmaceuticals, Inc.	115	Zimmer Biomet	10-11
PharmaDerm, a division of Fougere Pharmaceuticals, Inc. - Medical Affairs	67		

When is $35 > 115$?

The answer is simple when you look at which company has been consistently protecting podiatric physicians for 35 years.

The answer is PICA.





Some competitors tout their many years of insurance experience as a way to get their—pardon the pun—foot in the door with podiatry coverage. Make sure you ask the hard questions.

- 1) How many of those years have been in podiatry?
- 2) When did they start reaching out to podiatrists?
- 3) What happens in a couple of years when the market dynamics change again?
- 4) Will they abandon the podiatry market?

Just know PICA's answers to these questions are simple, like our math. We have been involved in protecting podiatrists and their interests for ALL of our 35 years. We have always worked closely with the podiatry industry and most importantly, we always will. PICA has always been and continues to be led by a podiatrist, and podiatrists are the focus of everything we do.

Don't be fooled by the new math. When you add it up, PICA comes out on top every time.

Contact us for more information or a quote.

www.picagroup.com • (800) 251-5727    

 **PICA**
Treated Fairly

A ProAssurance Company

Mission Statement of the Florida Podiatric Medical Association's Scientific and Management Seminar (SAM)

The Florida Podiatric Medical Association's educational mission is to promote continuing education in podiatric medicine, podiatric surgery, and practice management through workshops and seminars. Our commitment is to increase knowledge by offering every registrant the educational assistance needed to improve care for their patients and be successful in practice by promoting the benefits of scientific advancement in the treatment, prevention, and alleviation of podiatric ailments.

Approval

The Florida Podiatric Medical Association is approved by the Council on Podiatric Medical Education as a sponsor of continuing education in podiatric medicine.

Intended Audience

Podiatric residents and doctors of podiatric medicine.

Cancellation Policy

Cancellations are accepted through the last day of the meeting. A \$50 administrative fee will be charged for "no shows" who do not cancel. You will be billed for this fee or it will be deducted from your refund, if already paid.

Continuing Education Contact Hours (CECH) Awarded

Up to **30.75** Continuing Education Contact Hours (CECH) offered, depending on tracks attended.

Disclosure

Each speaker is required to disclose the existence of any financial and/or other relationships (e.g., employee, consultant, speaker's bureau, grant recipient, research support) he/she might have with (a) the manufacturer(s) of any commercial product(s) to be discussed during his/her presentation and/or (b) the commercial contributor(s) of the activity. Any such conflict will be announced by the individual introducing the speaker or by the speaker immediately preceding the lecture.

Contact the FPMA

1-800-277-3338

Florida Podiatric Medical Association

Executive Committee

Stephen F. Levin, DPM
President

Paul D. Brooks, DPM
First Vice President

Vacant
Second Vice President

Mark A. Lambert, DPM
Treasurer

Andrew M. Belis, DPM
Secretary

Maria G. Noll, DPM
Past President

Convention Committee

Dennis R. Frisch, DPM
Co-Chairman

Barney A. Greenberg, DPM
Co-Chairman

Robert Frimmel, DPM
Scientific Chairman

Dinah P. Cox
Meeting Planner
Donald J. Popper, DPM
Registration

Bradley C. Haves, DPM
Timothy H. Tillo, DPM
Conv. Committee Members

Joseph H. Strickland, DPM
Assistants' Program Chairman

Staff

Dinah P. Cox
Interim Executive Director

Bernadine Howell
Membership Coordinator

Becky Reese
*Public Affairs/
Website Coordinator*

Jane Thomas
Administrative Support

FPMA would like to thank the following SAM 2016 Sponsors:

ANNUAL PLATINUM SPONSOR

Bako Integrated Physician Solutions



PLATINUM SPONSOR

Organogenesis, Inc.



DIAMOND SPONSORS

Valeant Pharmaceuticals/APMA

RUBY SPONSOR

PharmaDerm, a division of Fougera Pharmaceuticals, Inc.

SILVER SPONSOR

Amerx Health Care

BRONZE SPONSORS

Podiatric Medical Assurance of Florida (PMAF)

Sammy Systems

FPMA would like to thank the following sponsors for supporting
SAM 2016 through Unrestricted Educational Grants:

Amerx Health Care

MiMedx

Organogenesis, Inc.

Osiris Therapeutics, Inc.

PICA

PRESENT e-Learning

Quell by Neurometrix

Sammy Systems

Wright Medical Technology

FPMA would like to thank these Other Participating Companies:

American Society for Asset Protection

The Hanover Insurance Group